



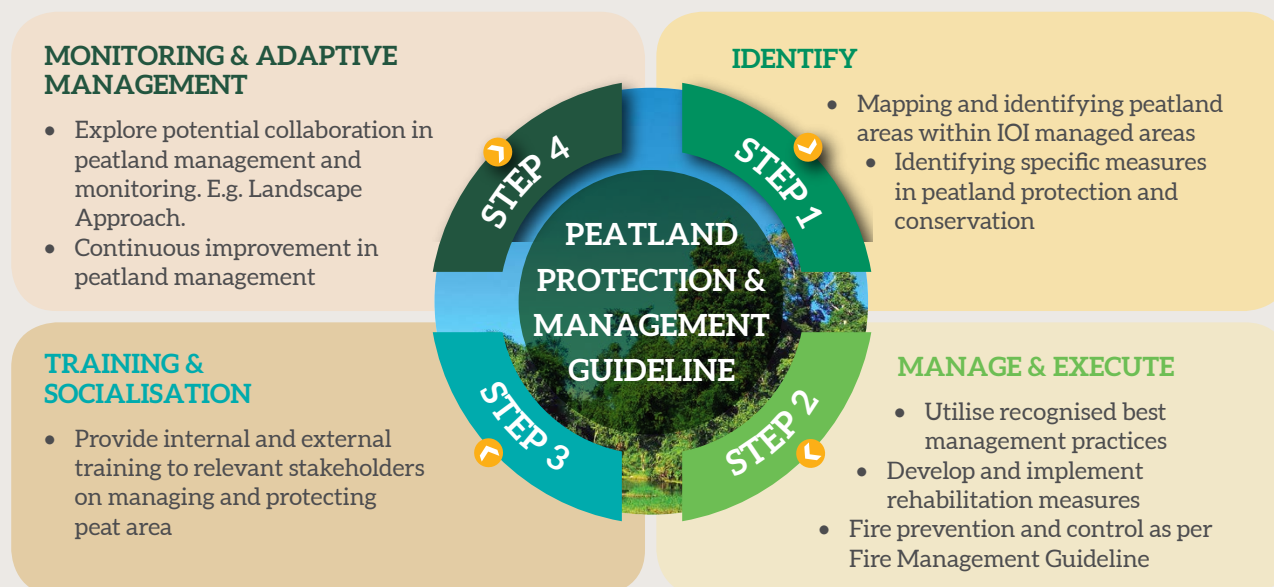
One of the fire towers at PT SKS

The policies and guidelines are in support of the Sustainable Palm Oil Policy (SPOP) and its management of major environmental concerns. The policies and guidelines are also developed to address implementation of environmental-related commitments, specifically:

1. **No Deforestation which include**
 - i. No development of High Carbon Stock (“HCS”) Forests
 - ii. No development of High Conservation Value (“HCV”) Areas
 - iii. Implement zero burning practices
2. **No Development on Peat which include**
 - i. No new development on peat regardless of depth
 - ii. Implement Best Management Practices for existing plantations on peat
 - iii. Where feasible, explore options for peat rehabilitation by working with experts and communities
3. **Adherence to all environment related laws and conventions (national and international)**

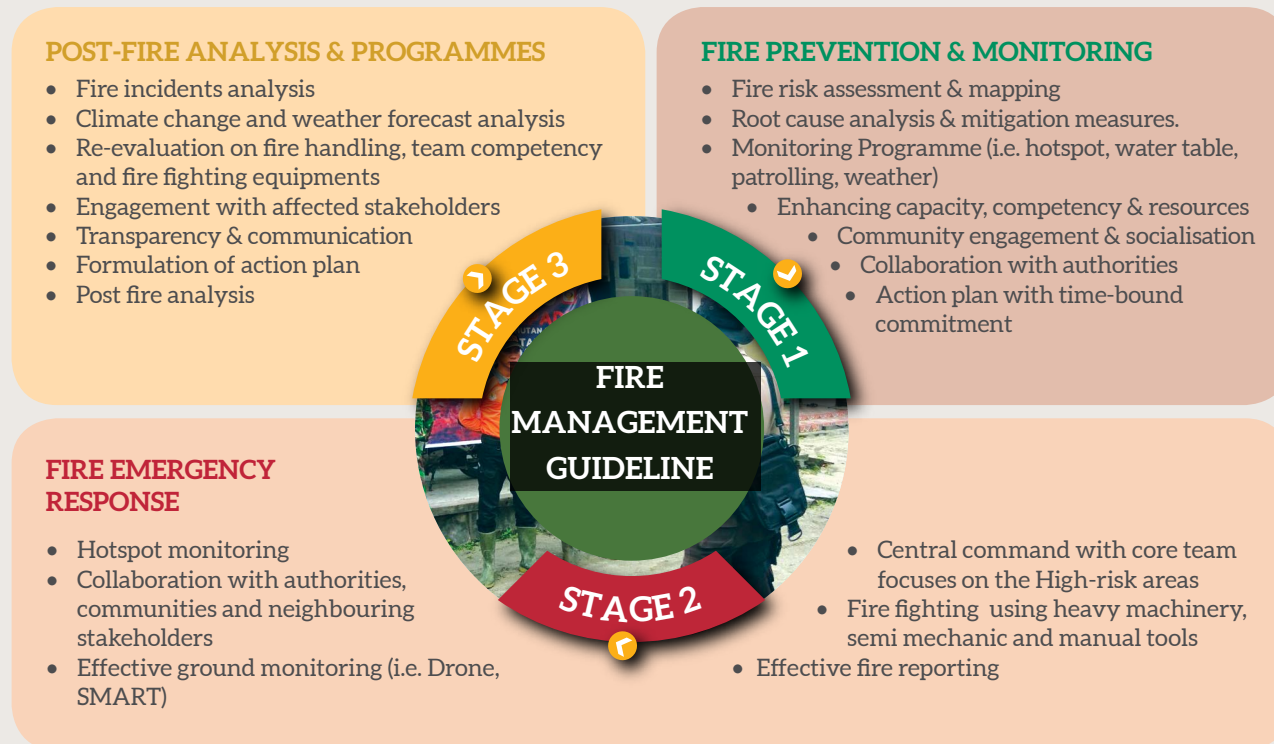
PEATLAND PROTECTION & MANAGEMENT GUIDELINE

This guideline provides general guidance on peatland protection and conservation, best management practices, rehabilitation of degraded peatland, fire prevention and control, as well as providing necessary trainings to internal and external stakeholders on the management of peatland within our plantation.s



FIRE MANAGEMENT GUIDELINE

This guideline provides detailed procedure in fire prevention and monitoring including fire risk assessment and various effective mitigation measures to prevent fire from happening in the estate. The guideline also covers several response measures that the estate could take in the case of fire and post-fire analysis for future continuous improvement process.



BIODIVERSITY & CONSERVATION GUIDELINE

This guideline defines the steps that the management could take in conservation and biodiversity protection within the estate. The steps involve identification of biodiversity & conservation value areas, execution of plans, crisis management in the case of wildlife encroachment and necessary mitigation & protection measures.

