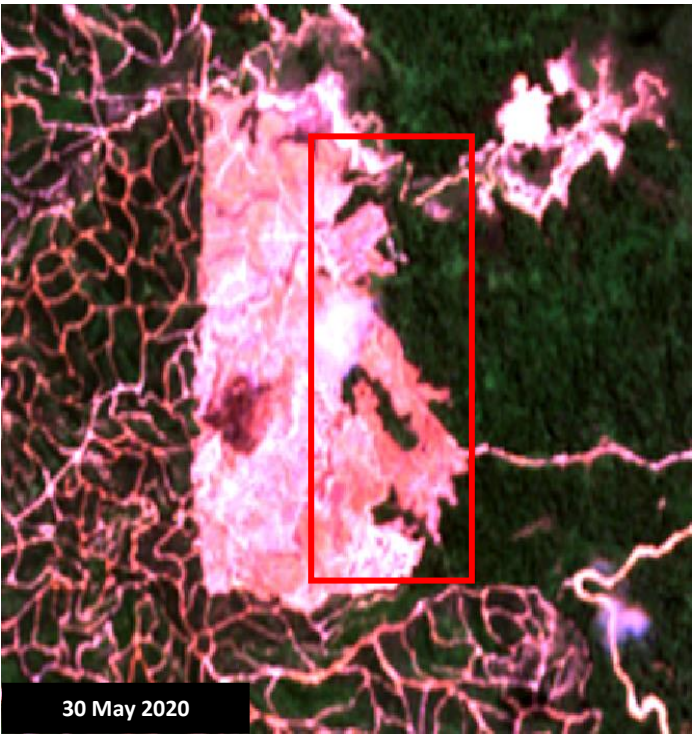
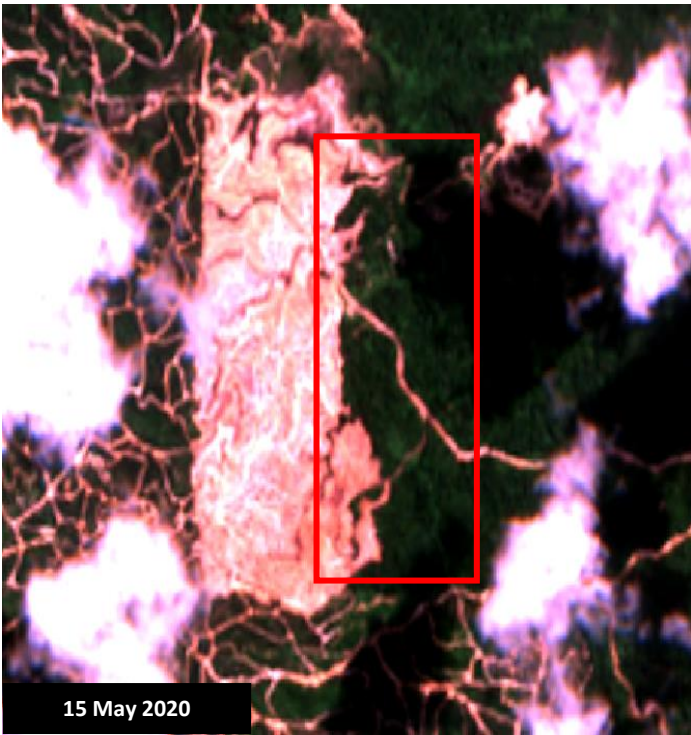








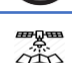






Instantstar Holdings Sdn Bhd – Aspirasi Kristal (M) Sdn Bhd
(Sandakan, Sabah)



Information and analysis :

	2016 – 2019 (ha)	Jan – 15 May 2020 (ha)	16 – 31 May 2020 (ha)		
	1,266	50	12		
	0	0	0		
	0	0	0		
	None				
	Orangutan		Not available		Not available
	JTUWMA		Sentinel 2		High
	Processors/traders: AAK, ADM, Bunge, Cargill, Fuji Oil, GAR, Goodhope, IFFCO, IOI, KLK, Lipidos Santiga, Louis Dreyfus, Mewah, Neste Oil, Nisshin Oil, Olam, Pertamina, HSA Group/PacificInter-Link, Sime Darby, Wilmar. Consumer goods companies: Avon, Colgate-Palmolive, Danone, Friesland Campina, General Mills, Johnson&Johnson, Kellogg's, L'Oréal, Mars, Mondelēz, Nestlé, P&G, PepsiCo, PZ Cussons, Reckitt Benckiser, Hershey, Unilever, Upfield, Vandemoortele.				
	<ul style="list-style-type: none">Aspirasi Kristal is granted an area of 5,033 ha in Bonggaya Forest Reserve for the establishment of an oil palm plantation.Aspirasi Kristal is owned for 66% by Instantstar Holdings Sdn Bhd, which is owned for 100% by Ms Lee Yoke Har and Ms Lee Yoke Hui. They are daughters of the late IOI-founder Lee Shin Cheng and related parties to IOI Corporation Berhad. Ms Lee Yoke Har is also the Executive Director of IOI Properties Group Berhad.Instantstar Holdings also owns 66% of the adjacent plantation company Satria Eramaju Sdn Bhd with a land title of 4,109 ha.				
	<ul style="list-style-type: none">Not available				

Deforestation Location

